


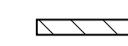
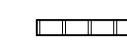
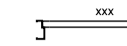
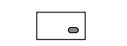
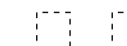

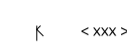

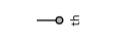


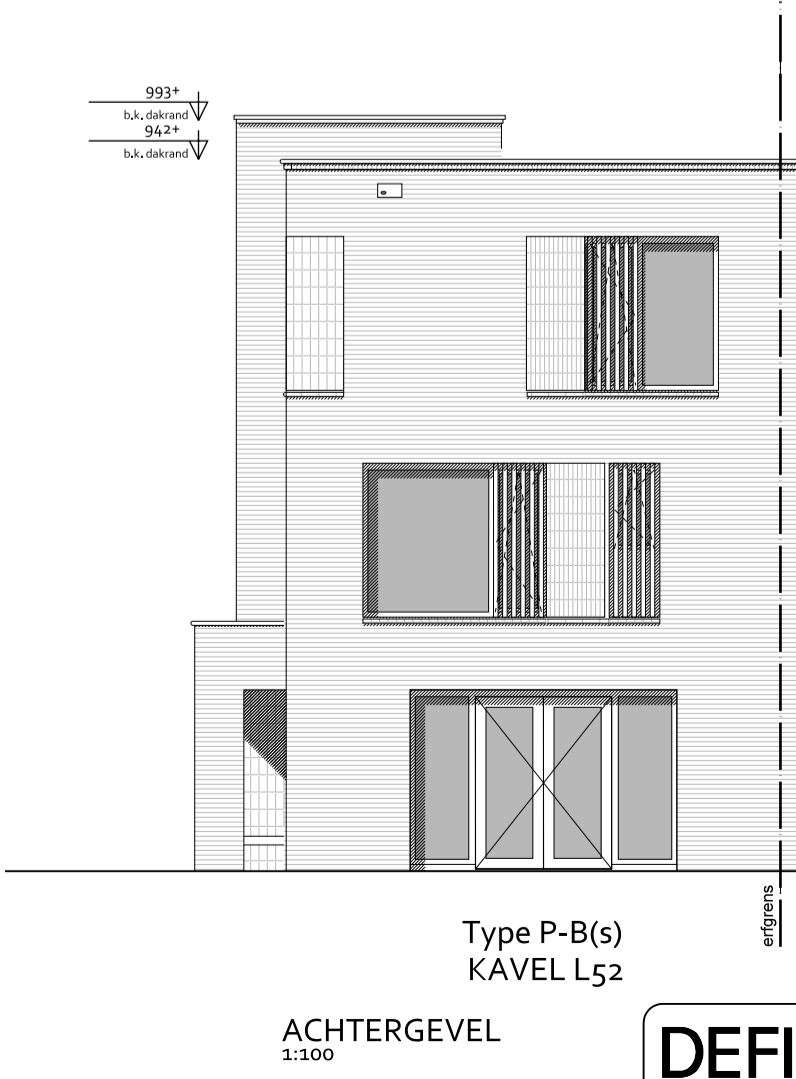
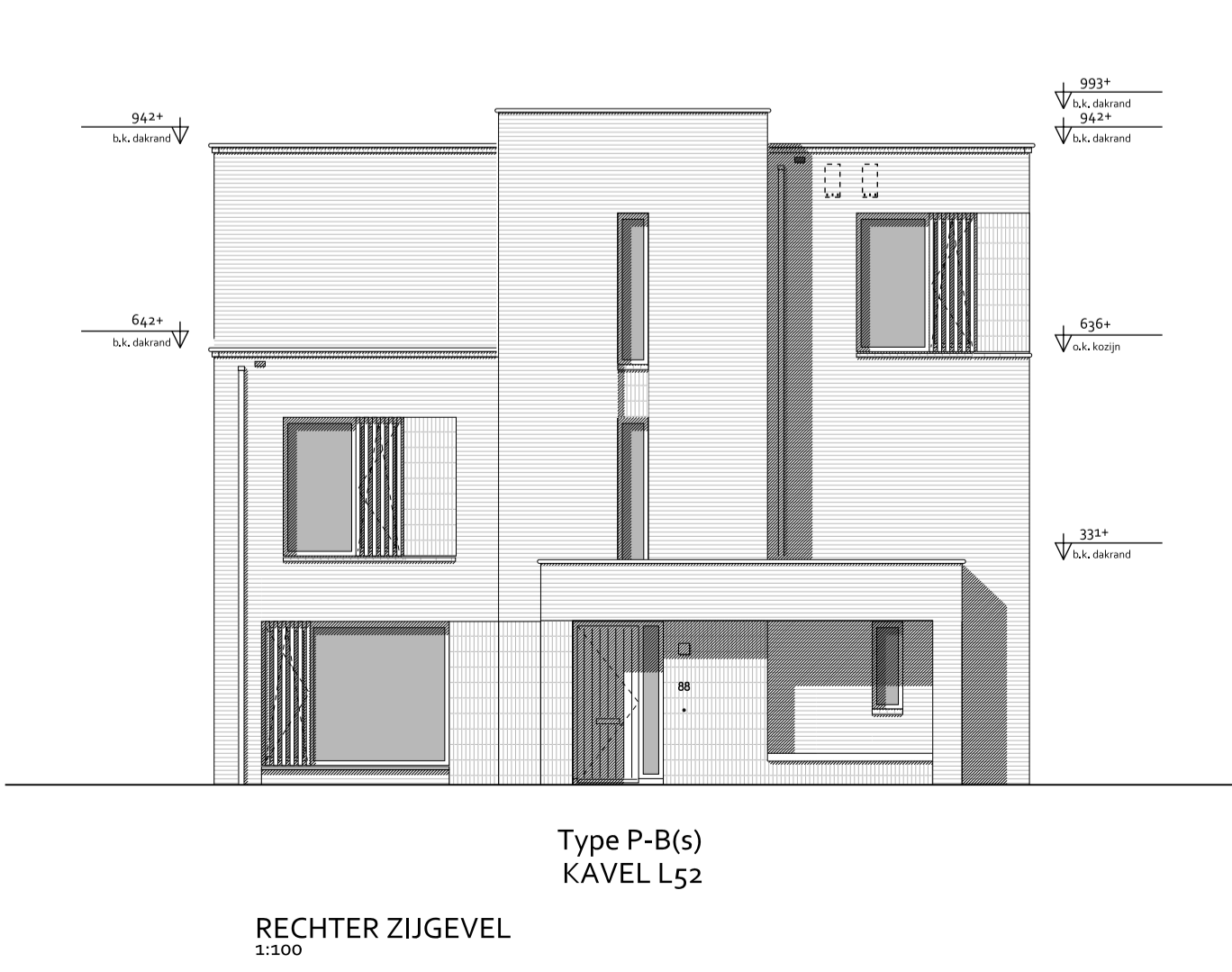
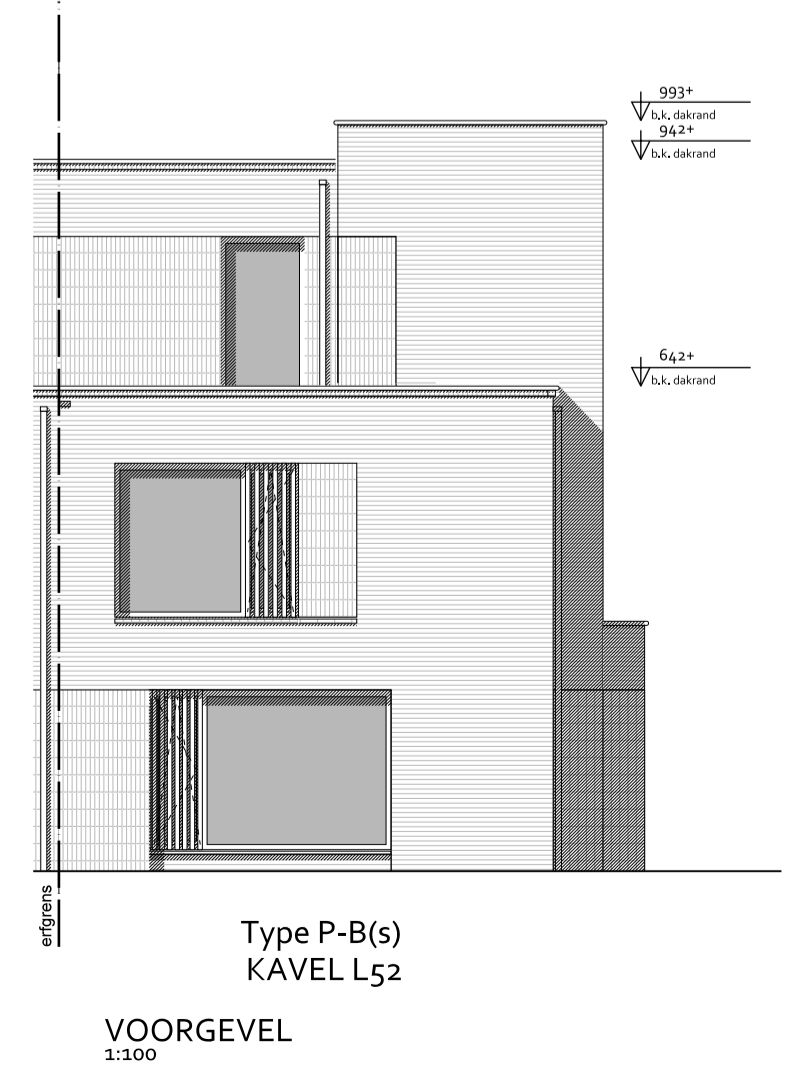
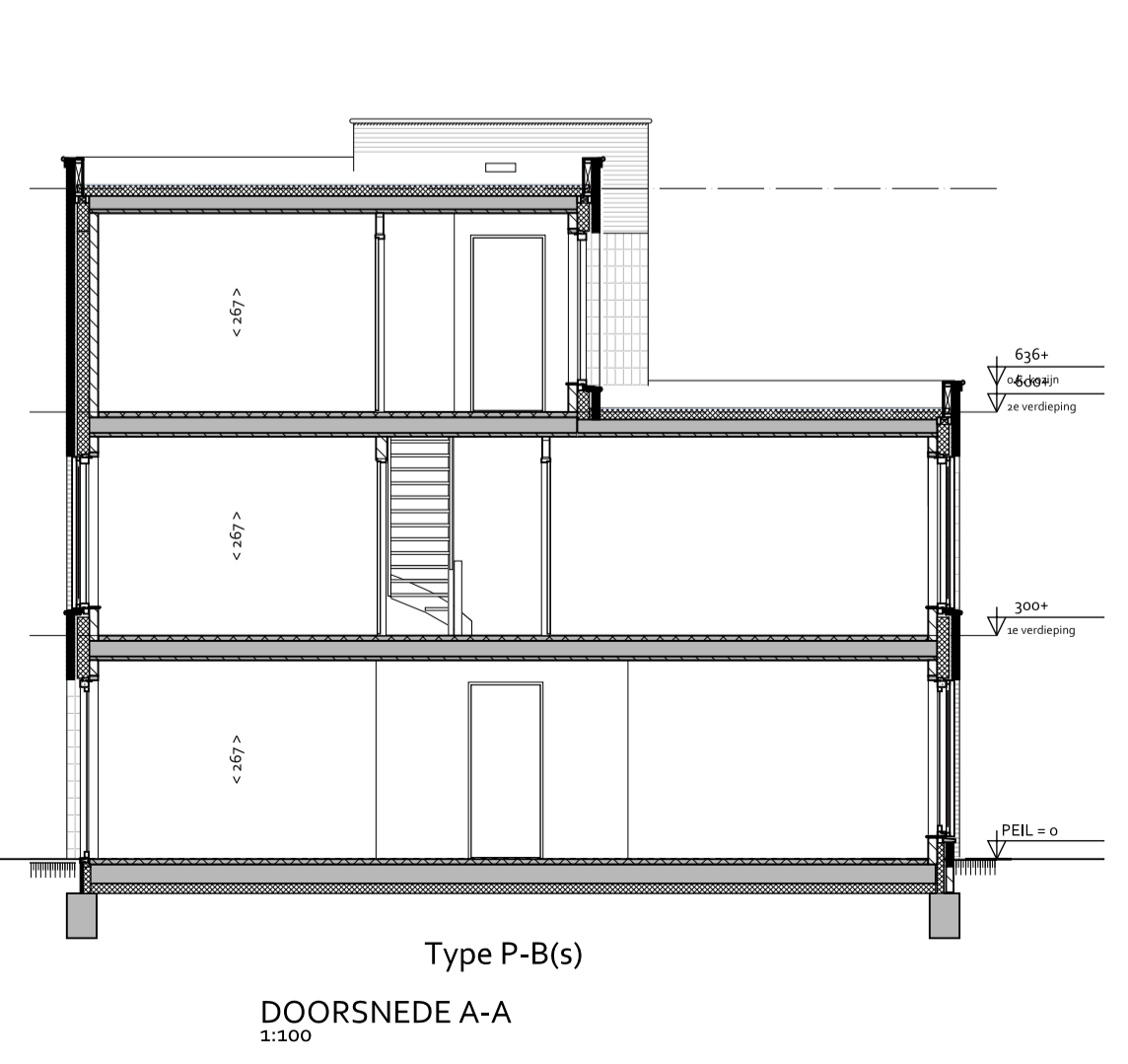
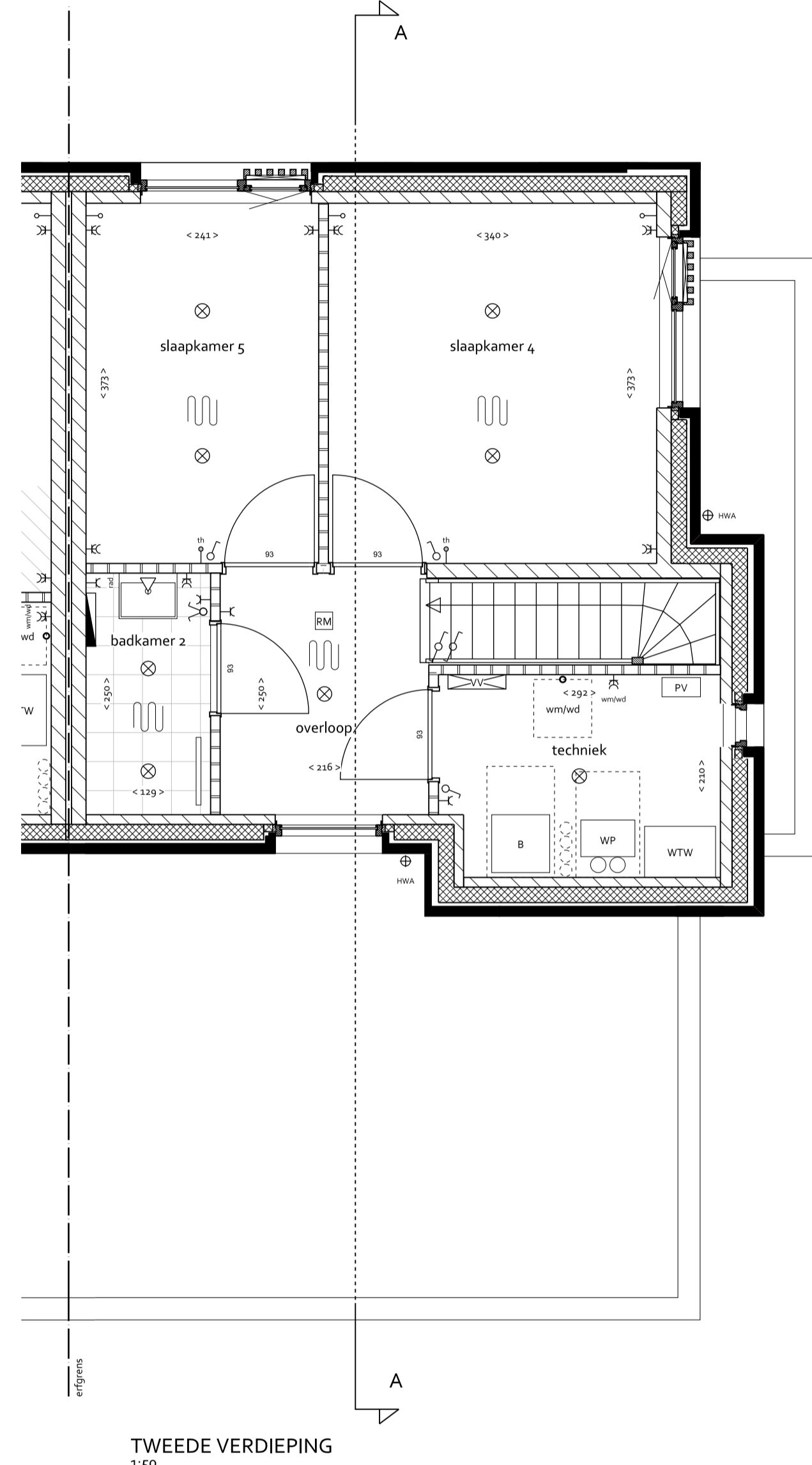
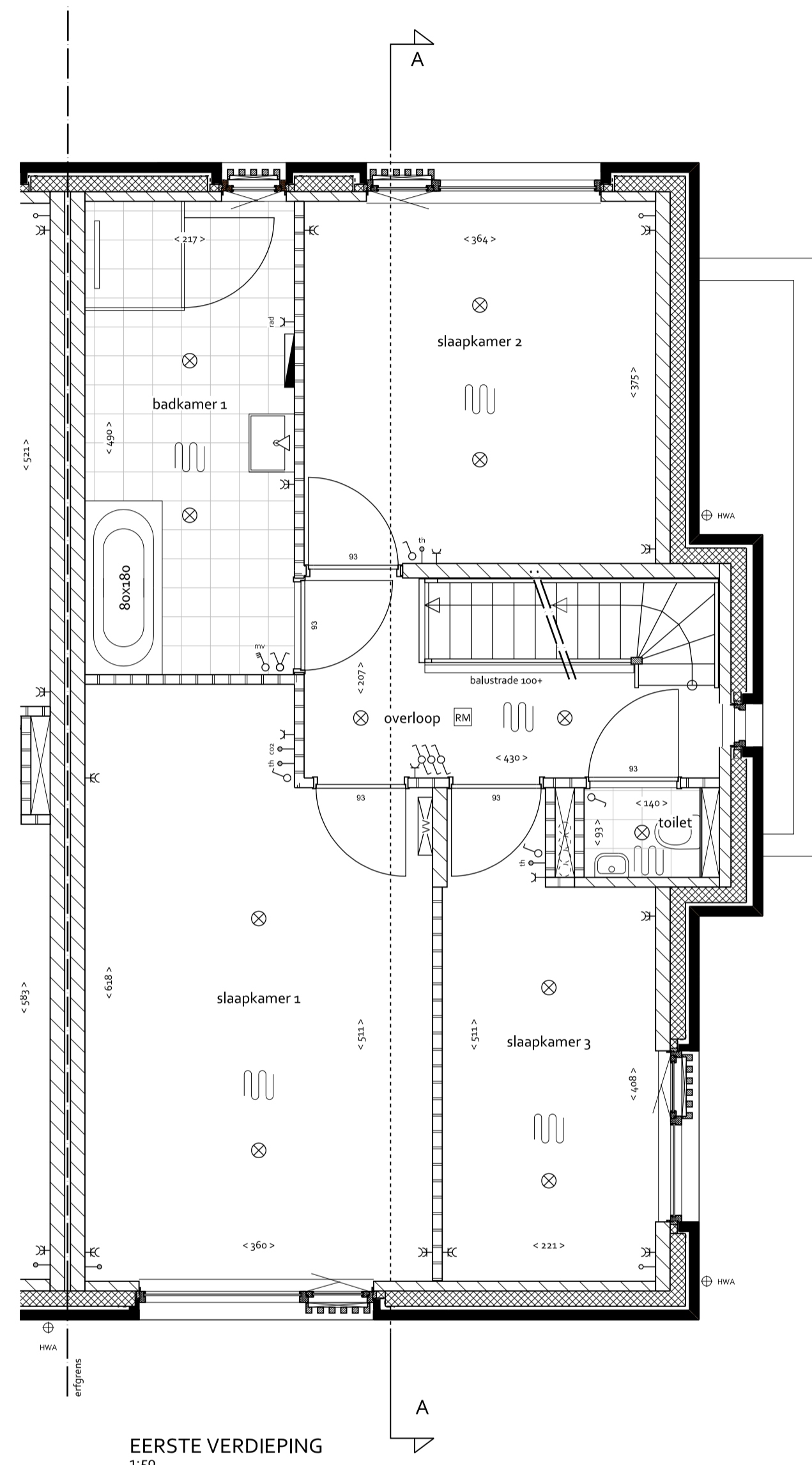
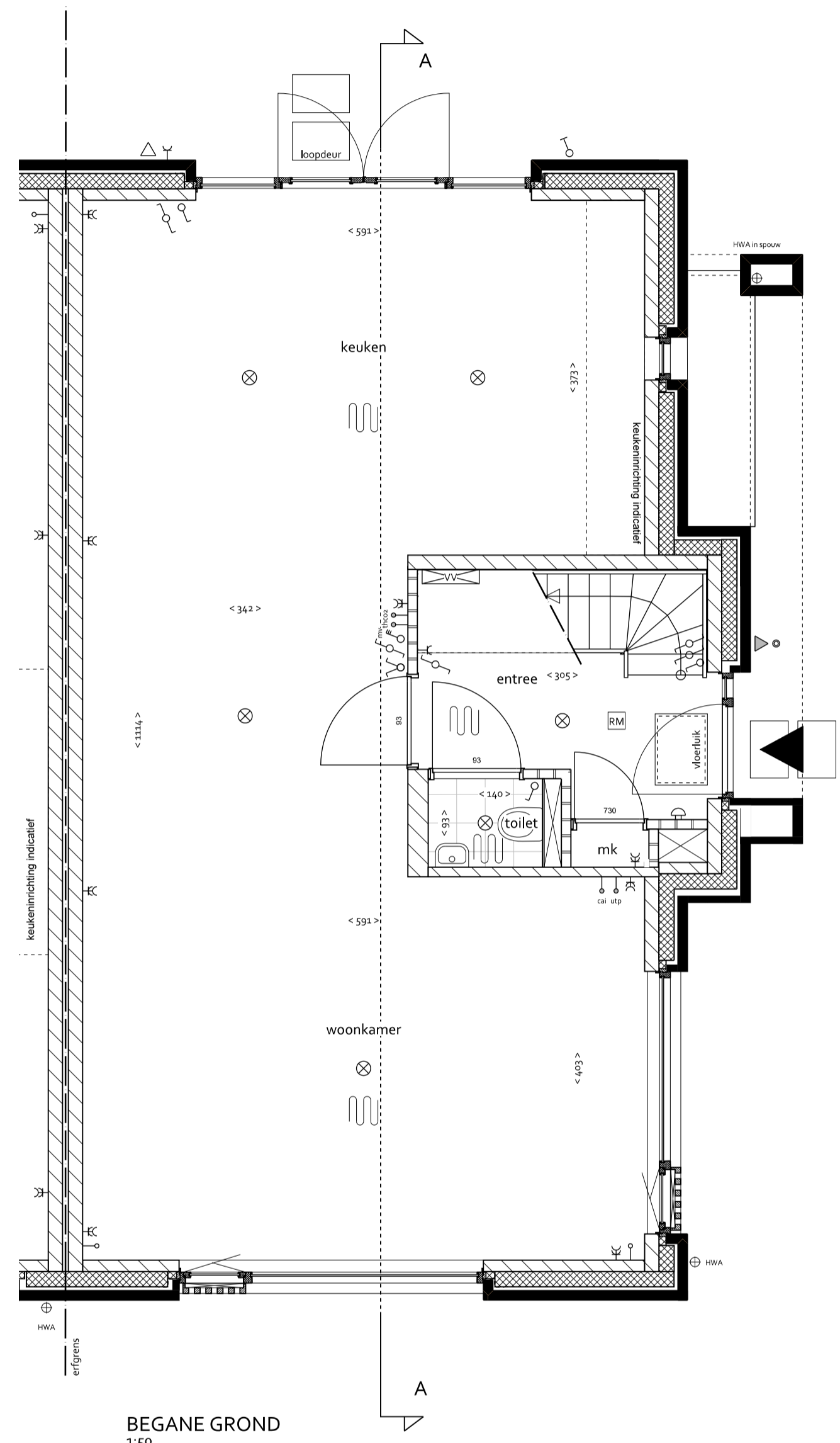
RENOVOOI


BOUWKUNDIG

-  woningentree (voordeur)
-  gewapend beton
-  baksteen
-  kalkzandsteen
-  lichte scheidingswand
-  binnendeur met deurmaat
-  gierzakwolkast
-  links-veermuiskast
-  rechts-veermuiskast (open stootvoeg)
-  maatvoering interieur in cm
-  staptegel 40x60 cm

INSTALLATIES

-  MK meterkast
-  VV verdelër vloerverwarming
-  WTW mechanische ventilatie-unit (warmterugwinning)
-  stl standleiding riolering
-  RM rookmelder volgens NEN12555
-  WP warmtepomp (met geïntegreerde boiler)
-  B boiler
-  PV omvormer pv-panelen
-  elektrische radiator
-  opstapplaats kooktoestel
-  buitenkraan
-  ruimte voorzien van vloerverwarming
-  enkele-bubbele schakelaar
-  3-standen schakelaar (mechanische ventilatie)
-  wissel- (hotel-) schakelaar
-  plafondlichtpunt
-  plafondlichtpunt incl. armatuur
-  wandlichtpunt
-  wandlichtpunt incl. armatuur
-  hemelwaterafvoer
-  deurbelddrukker / schel
-  leiding - bedraad
-  leiding - onbedraad (doss)
-  thermostraat
-  cos sensor
-  aansluitpunt kabel
-  aansluitpunt telefoon/data
-  enkele-bubbel wandcontactdoos graaand
-  wandcontactdoos wasmachine / droger
-  wandcontactdoos elektrische radiator



	project	Landgoed Coudewater - Lobben fase 2
	fase	Verkooptekening
	tekening	Kavel L52 Type-P-B
	datum: 10-07-2024	schaal: 1:50 / 1:100

DEFINITIEF