

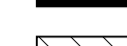
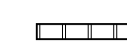
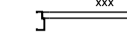


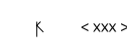



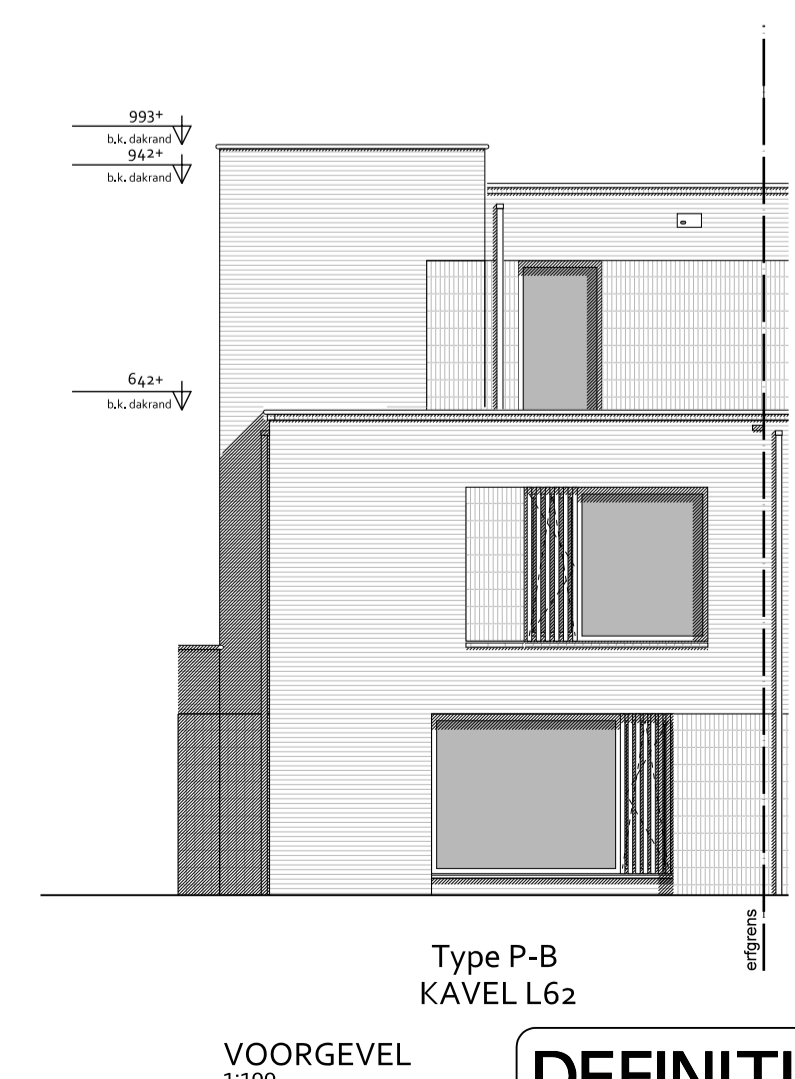
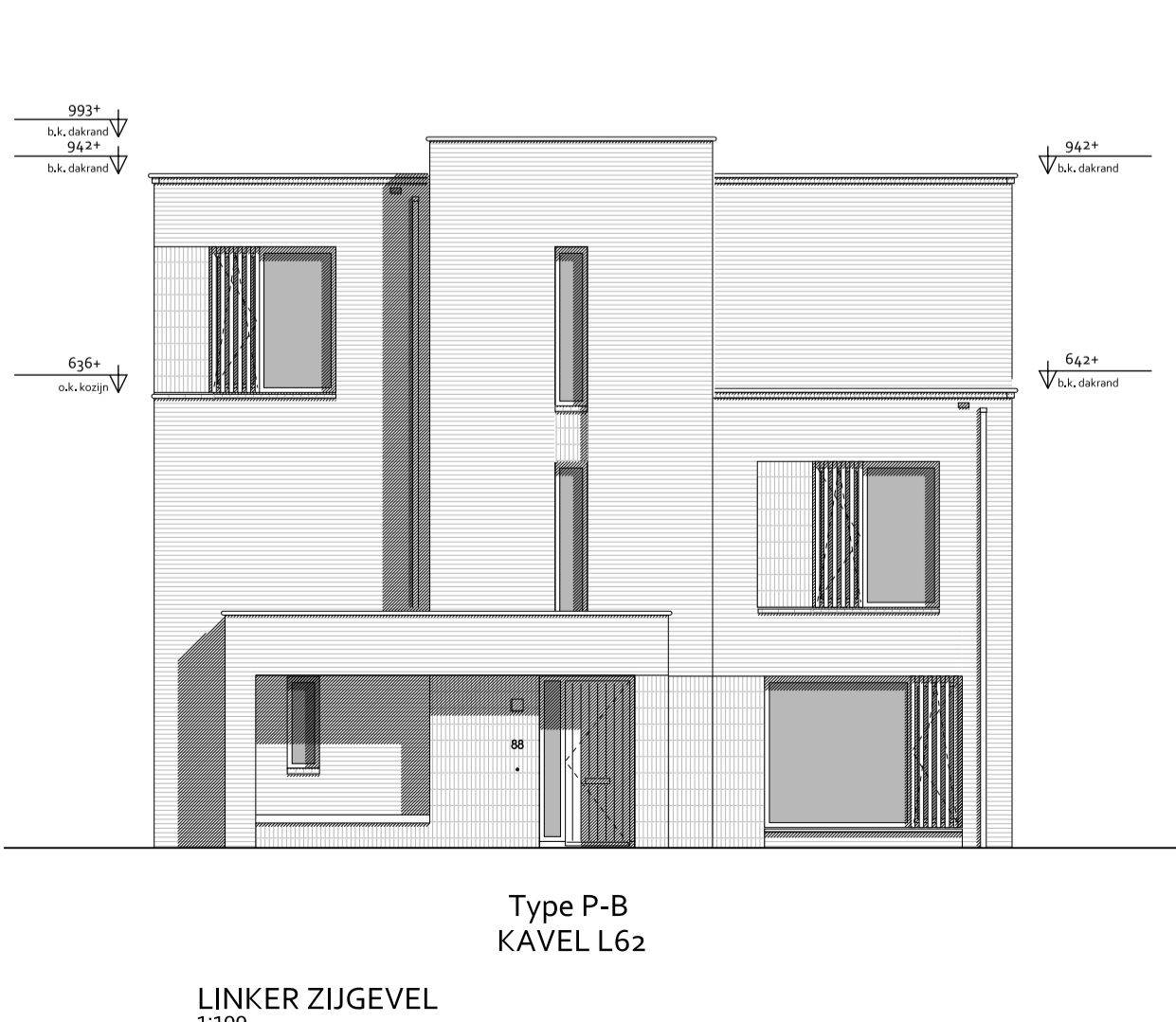
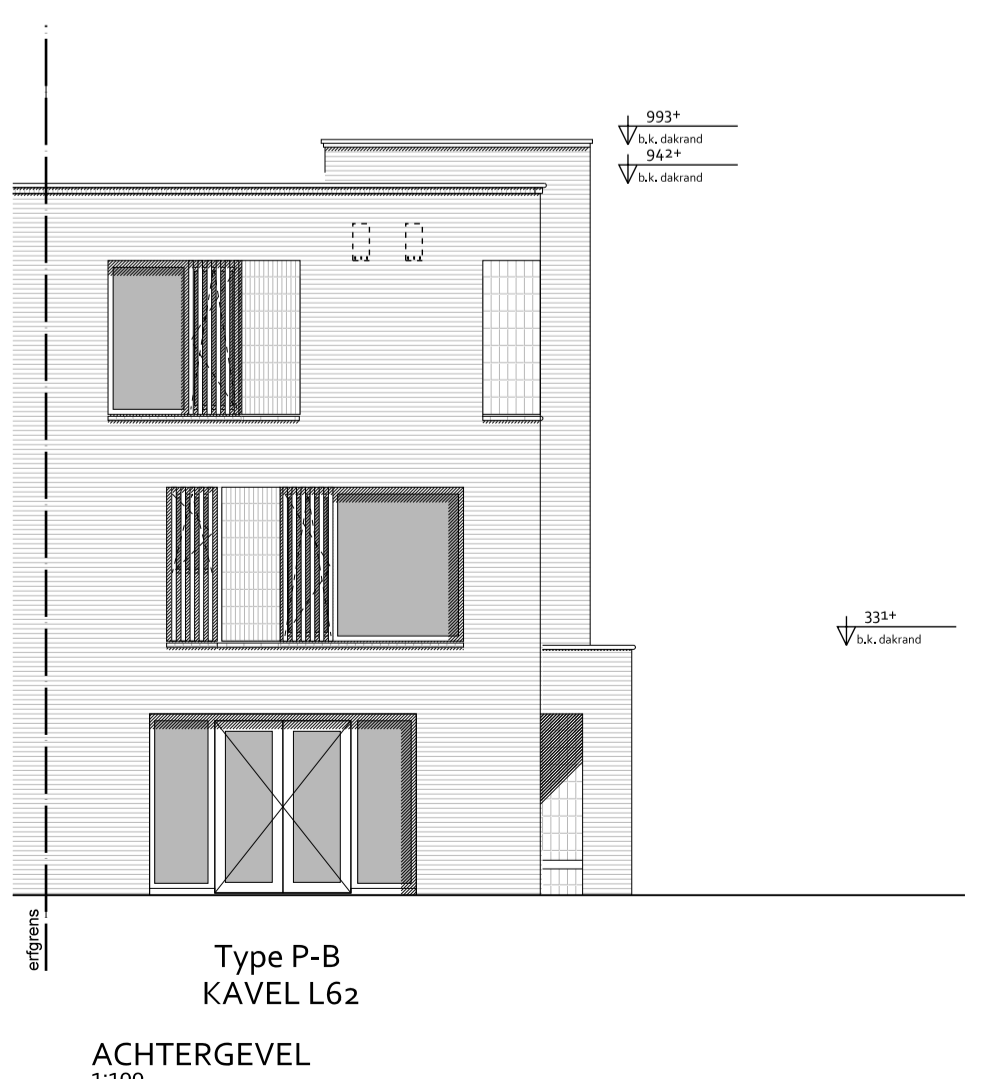
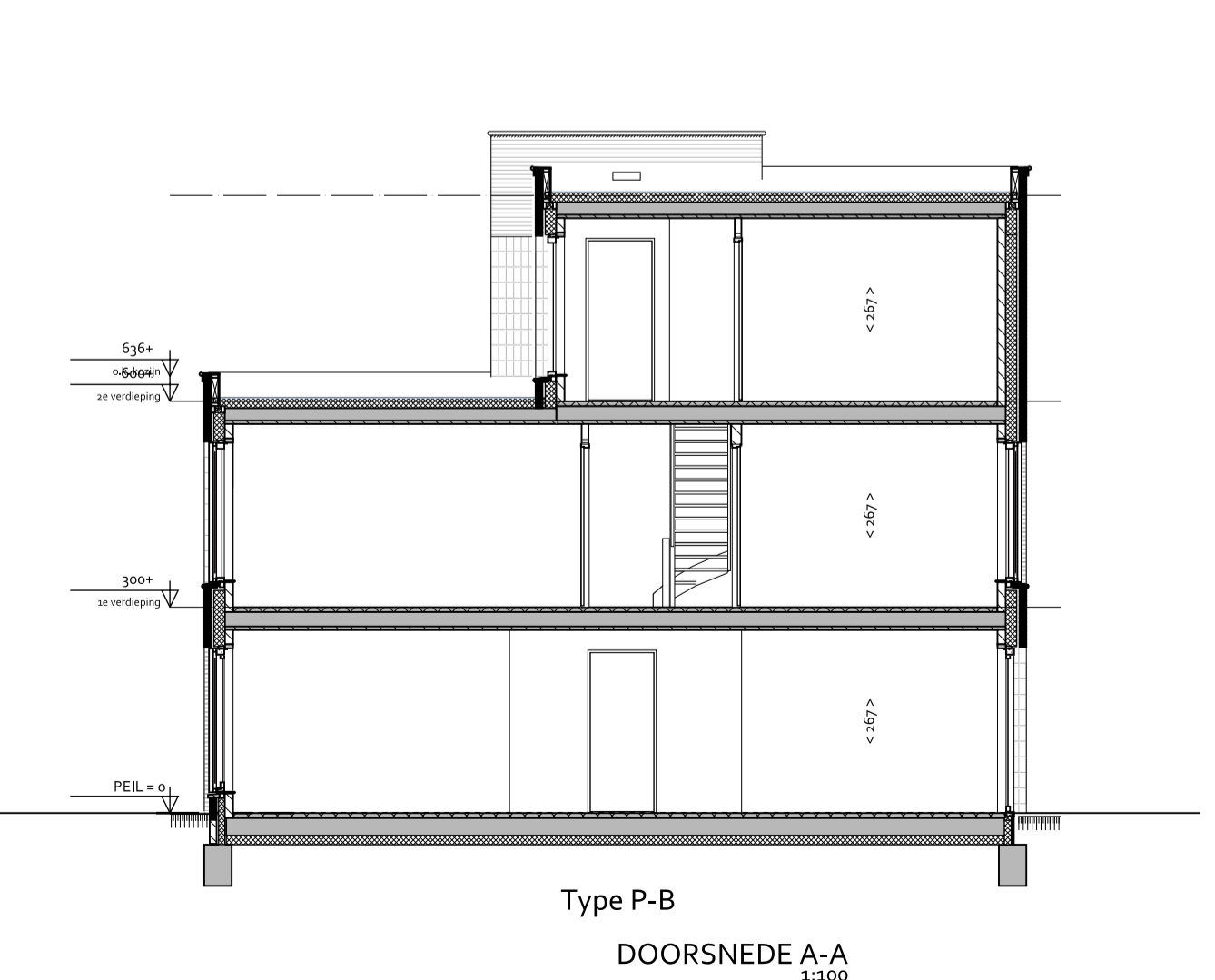
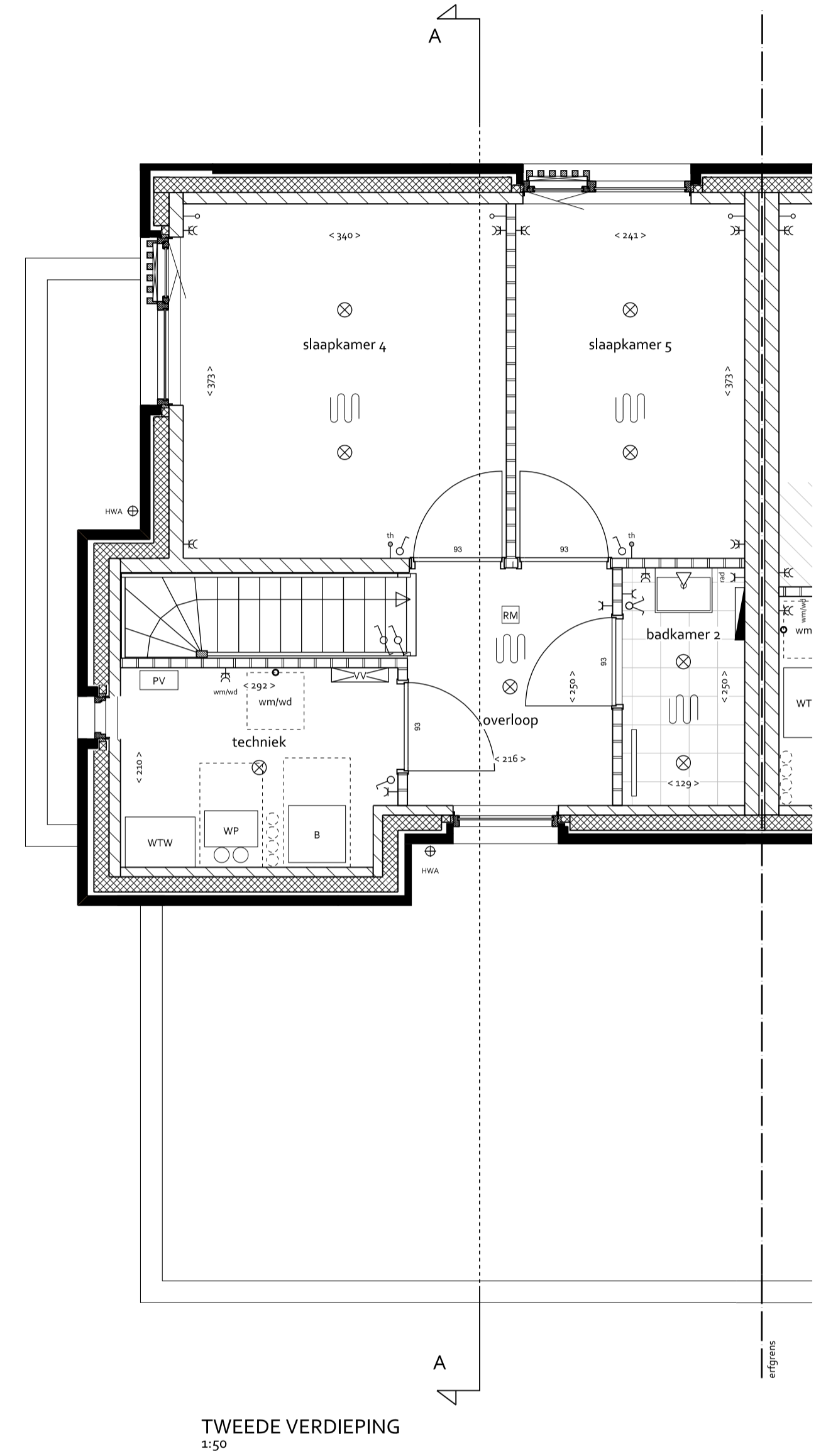
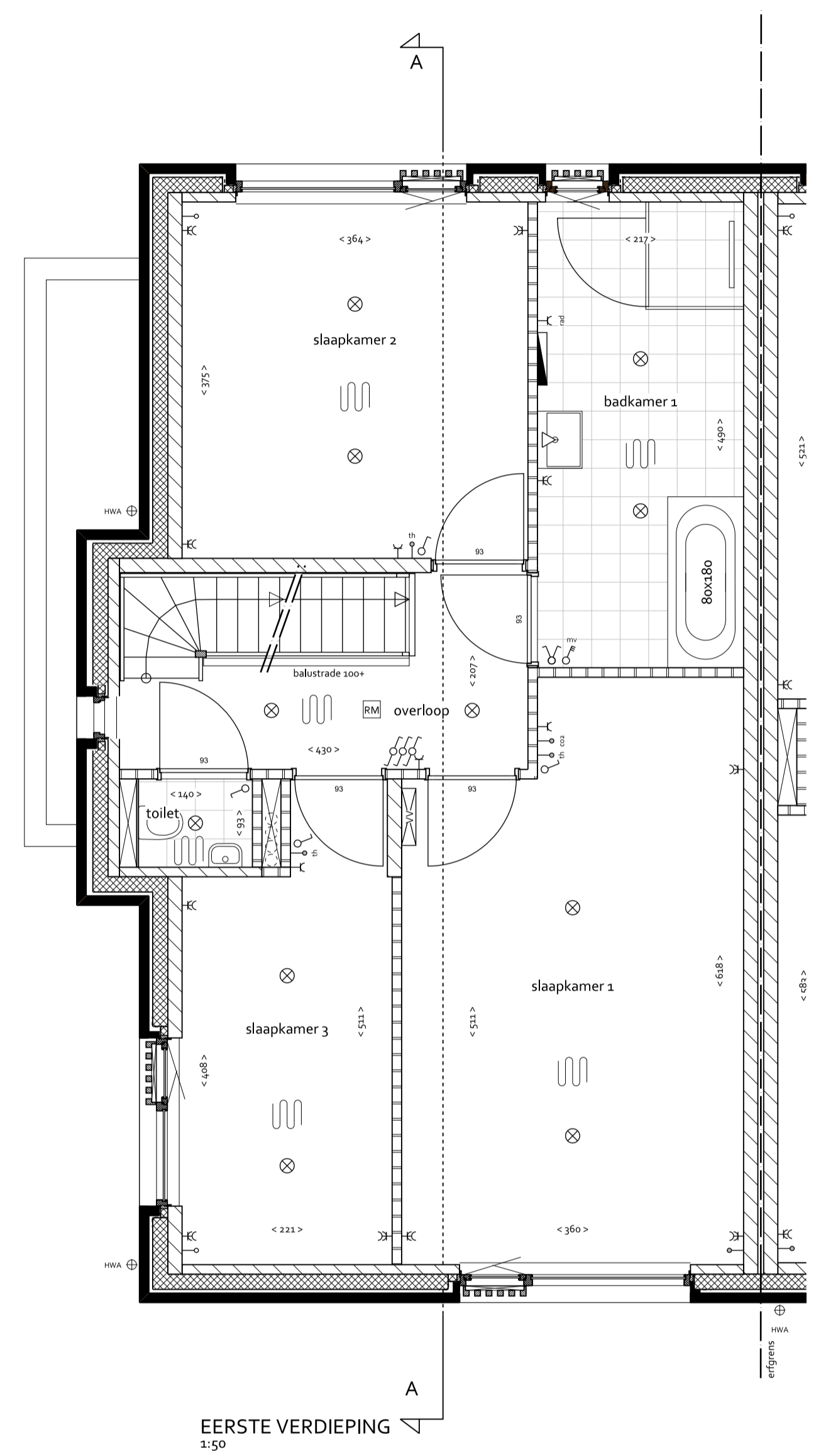
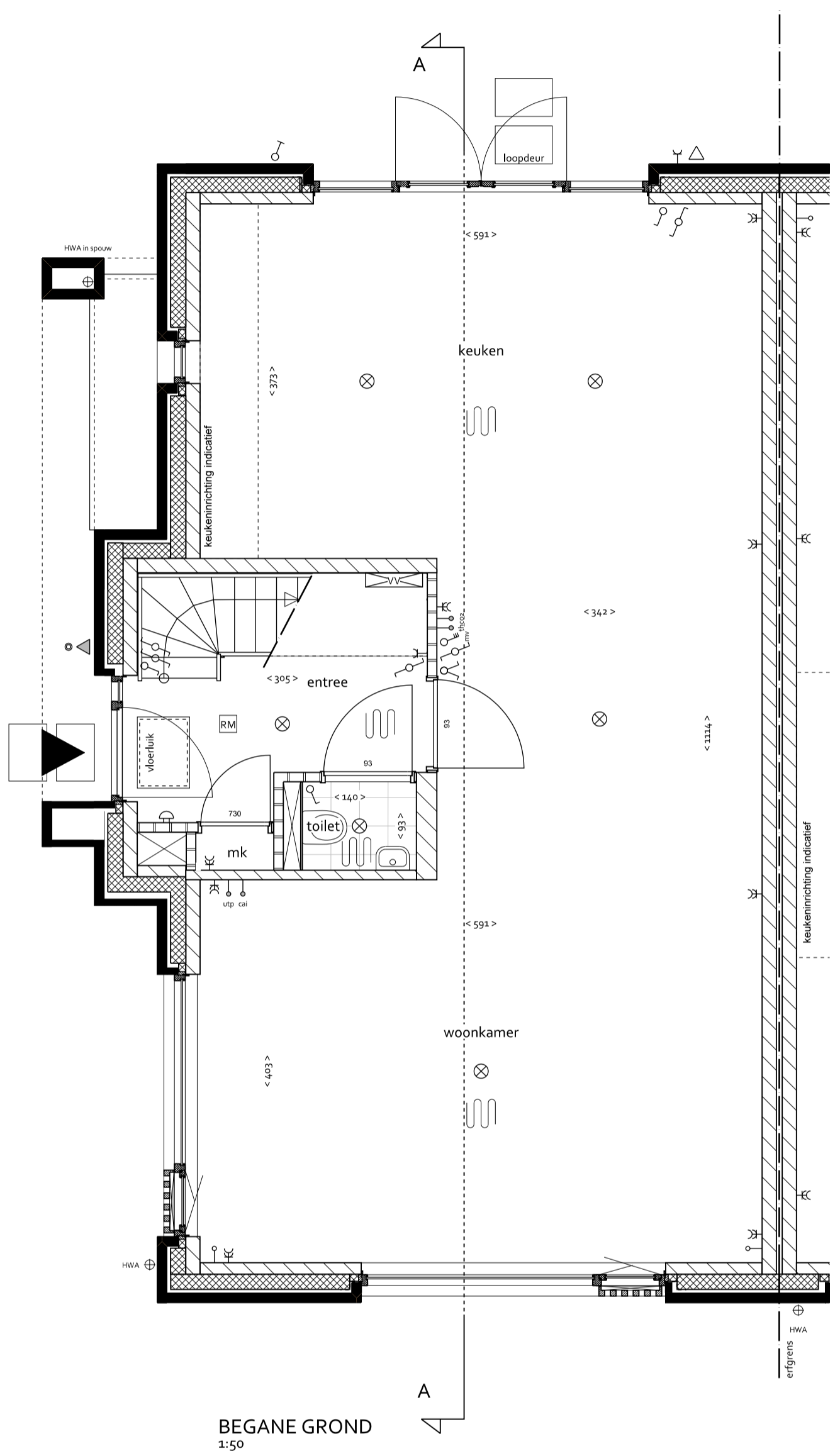



- RENVOOI**
- BOUWKUNDIG**
-  woningentree (voordeur)
 -  gewapend beton
 -  baksteen
 -  kalkzandsteen
 -  lichte scheidingwand
 -  binnen deur met deurmaat
 -  gierzakwaaier
 -  links: vleermuiskast
 -  rechts: vleermuiskast (open stootvoeg)
 -  maatvoering interieur in cm
 -  staptegel 6x6 cm

- INSTALLATIES**
- MK meterkast
 - VV verdeler vloerverwarming
 - WTW mechanische ventilatie-unit (warmterugwinning)
 - stl standleiding riolering
 - RM rookmelder volgens NEN3555
 - WP warmtepomp (met geïntegreerde boiler)
 - B boiler
 - PV omvormer pv-panelen
 -  elektrische radiator
 -  opstelplaats kooktoestel
 -  buitenkraan
 -  ruimte voorzien van vloerverwarming
 -  enkele-bubbele schakelaar
 -  3-standen schakelaar (mechanische ventilatie)
 -  wissel- (hotel-) schakelaar
 -  plafondlichtpunt
 -  plafondlichtpunt incl. armatuur
 -  wandlichtpunt
 -  wandlichtpunt incl. armatuur
 -  hembelwaterafvoer
 -  deurbedrukker / schel
 -  leiding - bedraad
 -  leiding - onbedraad (doos)
 -  thermostraat
 -  CO2 sensor
 -  aansluitpunt kabel
 -  aansluitpunt telefoon/data
 -  enkel-dubbel wandcontactdoos geaard
 -  wandcontactdoos wasmachine / droger
 -  wandcontactdoos elektrische radiator





project	Landgoed Coudewater - Lobben fase 2
fase	Verkooptekening
tekening	Kavel L62 Type-P-B
datum: 10-07-2024	schaal: 1:50 / 1:100 formaat: A1

DEFINITIEF