
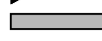

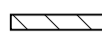

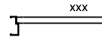

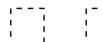

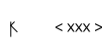






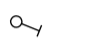
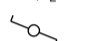



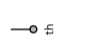
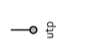


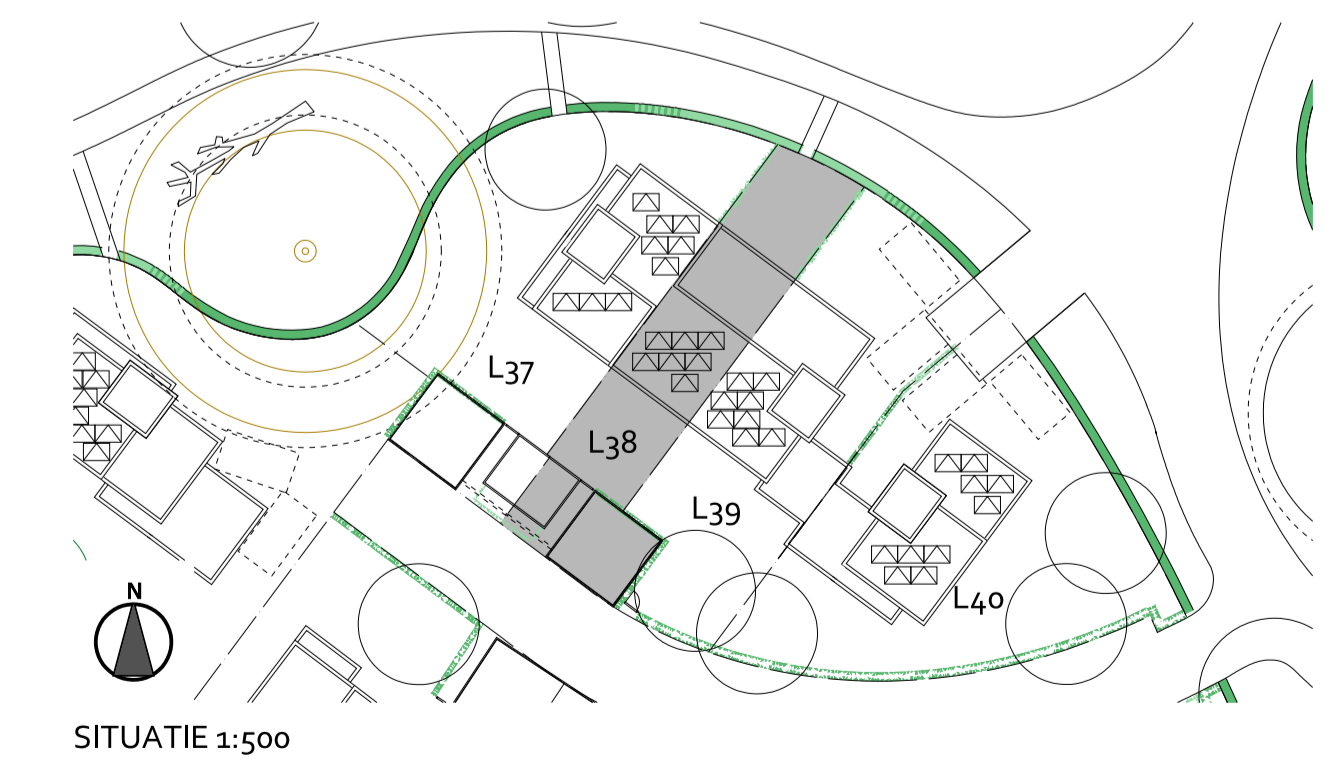
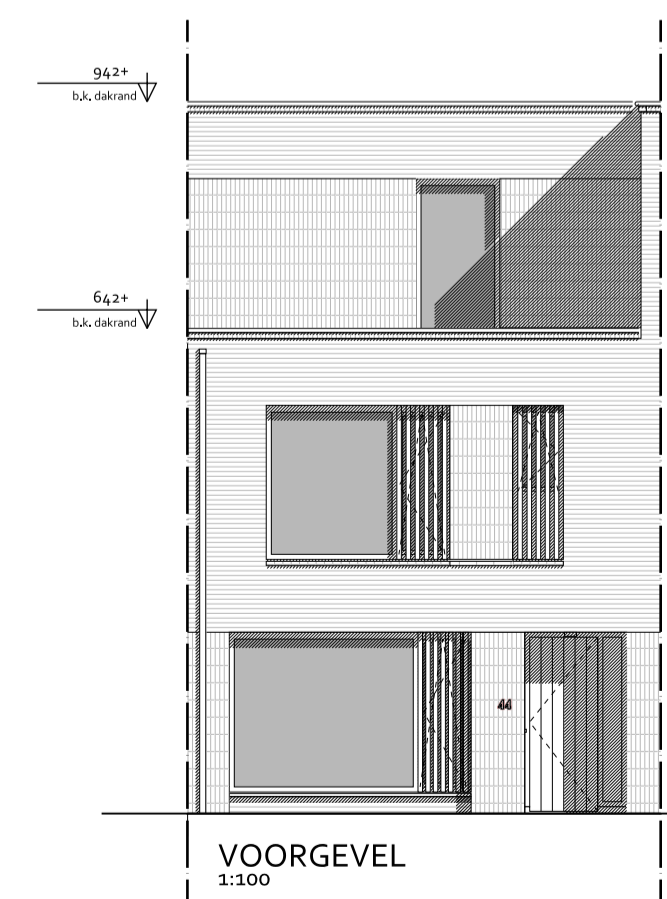
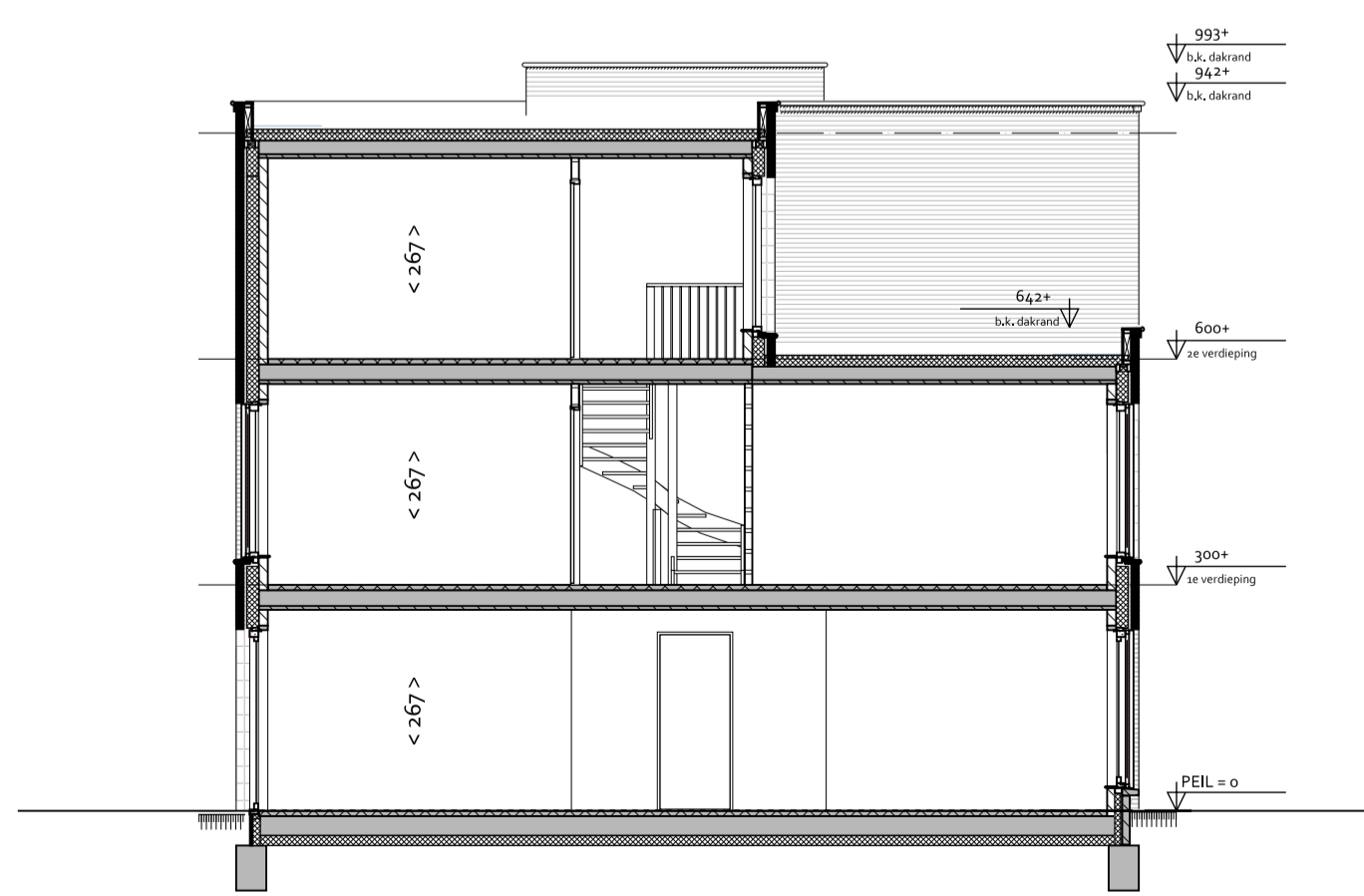
RENVOOI

BOUWKUNDIG


-  woningentree (voordeur)
-  gewapend beton
-  baksteen
-  kalkzandsteen
-  lichte scheidingwand
-  binnendeur met deurmaat
-  gierzakwast
-  links: vleermuiskast
-  rechts: vleermuiskast (open stootvoeg)
-  maatvoering interieur in cm
-  staptegefel 10x60 cm

INSTALLATIES

-  MK meterkast
-  VV radiator
-  WTW mechanische ventilatie-eenheid (warmteregeneratie)
-  stl standleiding riolering
-  RM roomkelder volgens NEN 2555
-  WP warmtepomp
-  B boiler
-  PV omvormer pv-panelen
-  elektrische radiator
-  opstelplaats kooktoestel
-  buitenkraan
-  ruimte voorzien van vloerverwarming
-  enkele-bubbel schakelaar
-  3-standen schakelaar (mechanische ventilatie)
-  wissel- (hotel) schakelaar
-  plafondlichtpunt
-  plafondlichtpunt incl. armatuur
-  wandlichtpunt
-  wandlichtpunt incl. armatuur
-  hnw hot water tap
-  deurbedrukker / schel
-  leiding - bedraad
-  leiding - onbedraad (doos)
-  thermostraat
-  aansluitpunt kabel
-  aansluitpunt telefoon/data
-  enkel-bubbel wandcontactdoos geard
-  wandcontactdoos wasmachine / droger
-  wandcontactdoos elektrische radiator



DEFINITIEF

	project	Landgoed Coudewater - Lobben
	fase	Verkooptekening
	tekening	Kavel L38 Type: P-A
	datum: 11-12-2023	schaal: 1:50 / 1:100