


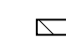
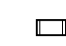
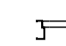

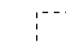





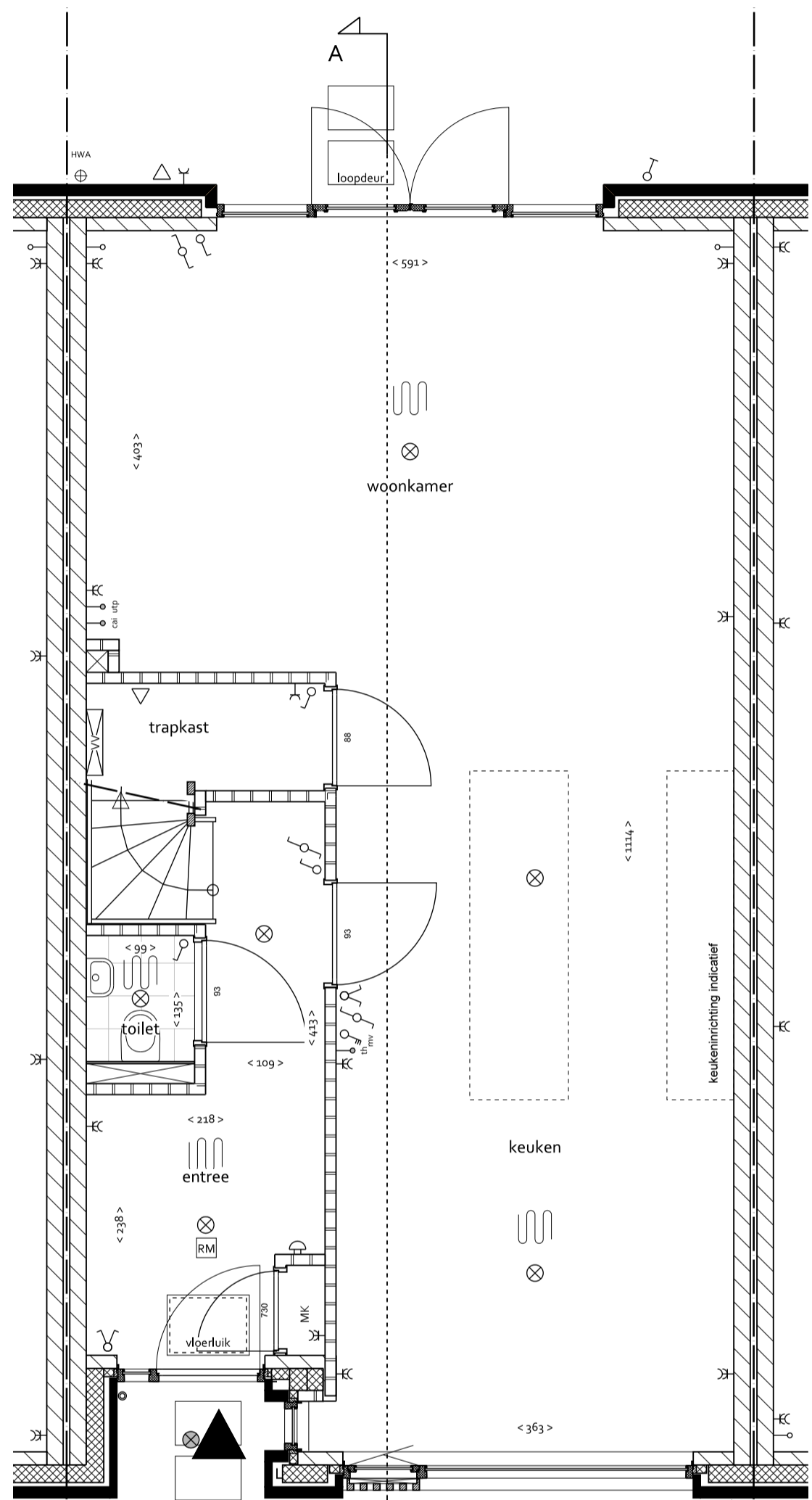
RENVOOI

BOUWKUNDIG

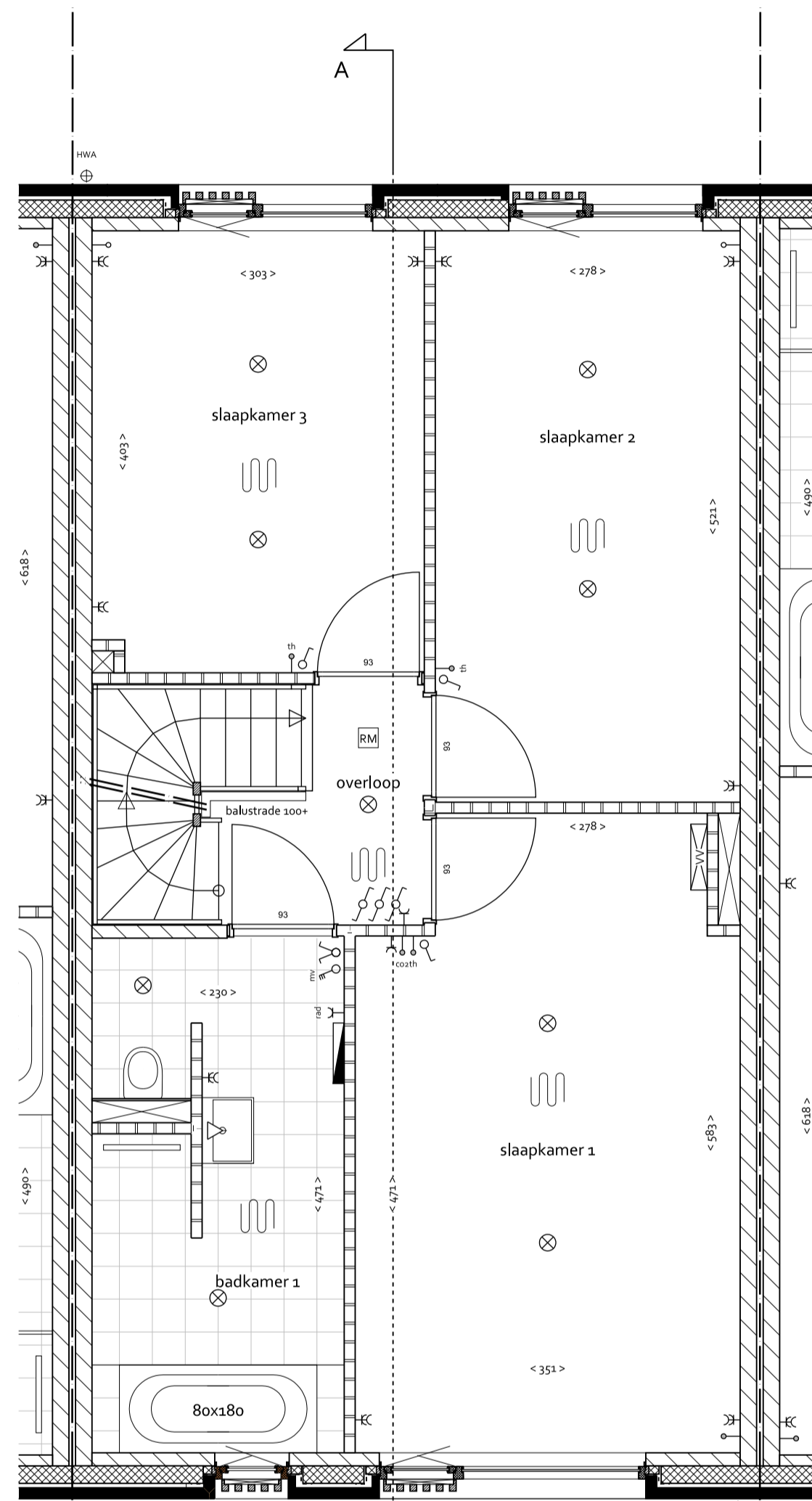
-  woningentree (voordeur)
-  gewapend beton
-  baksteen
-  kalkzandsteen
-  lichte scheidingswand
-  binnen deur met deurmaat
-  gierzakwast
-  links: vbermuiskast
-  rechts: vbermuiskast (open stootvoeg)
-  maatvoering interieur in cm
-  staptegeel 40/60 cm

INSTALLATIES

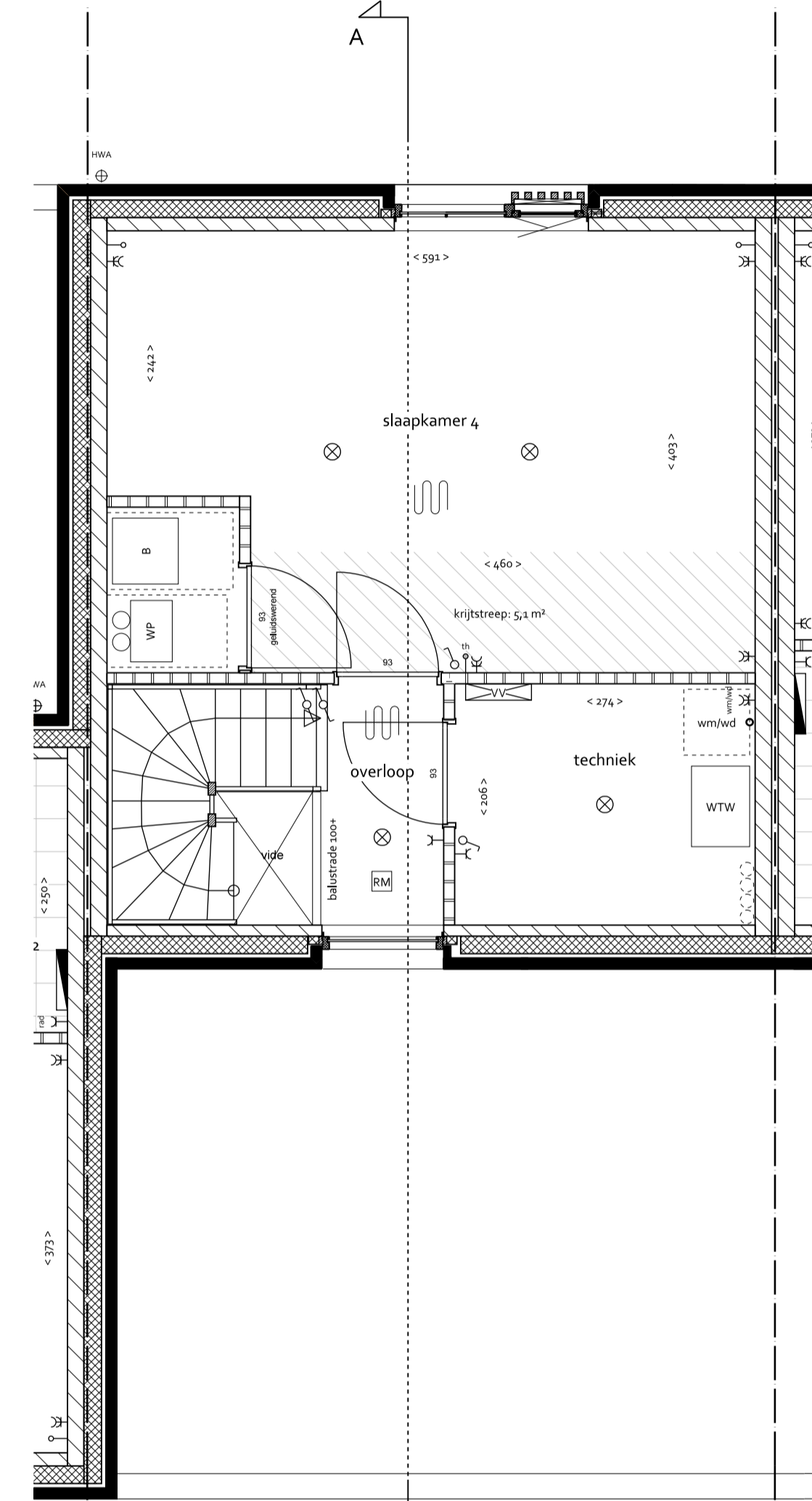
-  MK meterkast
-  VV radiator
-  WTW mechanische ventilatie-eenheid (warmtegevoelings)
-  stl standleiding riolering
-  RM rookmelder volgens NEN3555
-  WP warmtepomp (met geïntegreerde boiler)
-  B boiler
-  PV omvormer pv-panelen
-  elektrische radiator
-  opstelplaats kooktoestel
-  buitenkraan
-  ruimte voorzien van vloerverwarming
-  enkele-bubbele schakelaar
-  3-standen schakelaar (mechanische ventilatie)
-  wissel- (hotek) schakelaar
-  plafondlichtpunt
-  wandlichtpunt incl. armatuur
-  wandlichtpunt incl. armatuur
-  hemelwaterafvoer
-  deurbedrukker / schel
-  leiding - bedraad
-  leiding - onbedraad (doos)
-  thermostraat
-  CO2 sensor
-  aansluitpunt kabel
-  aansluitpunt telefoon/data
-  enkel-bubbel wandcontactdoos geaard
-  wandcontactdoos wasmachine / droger
-  wandcontactdoos elektrische radiator



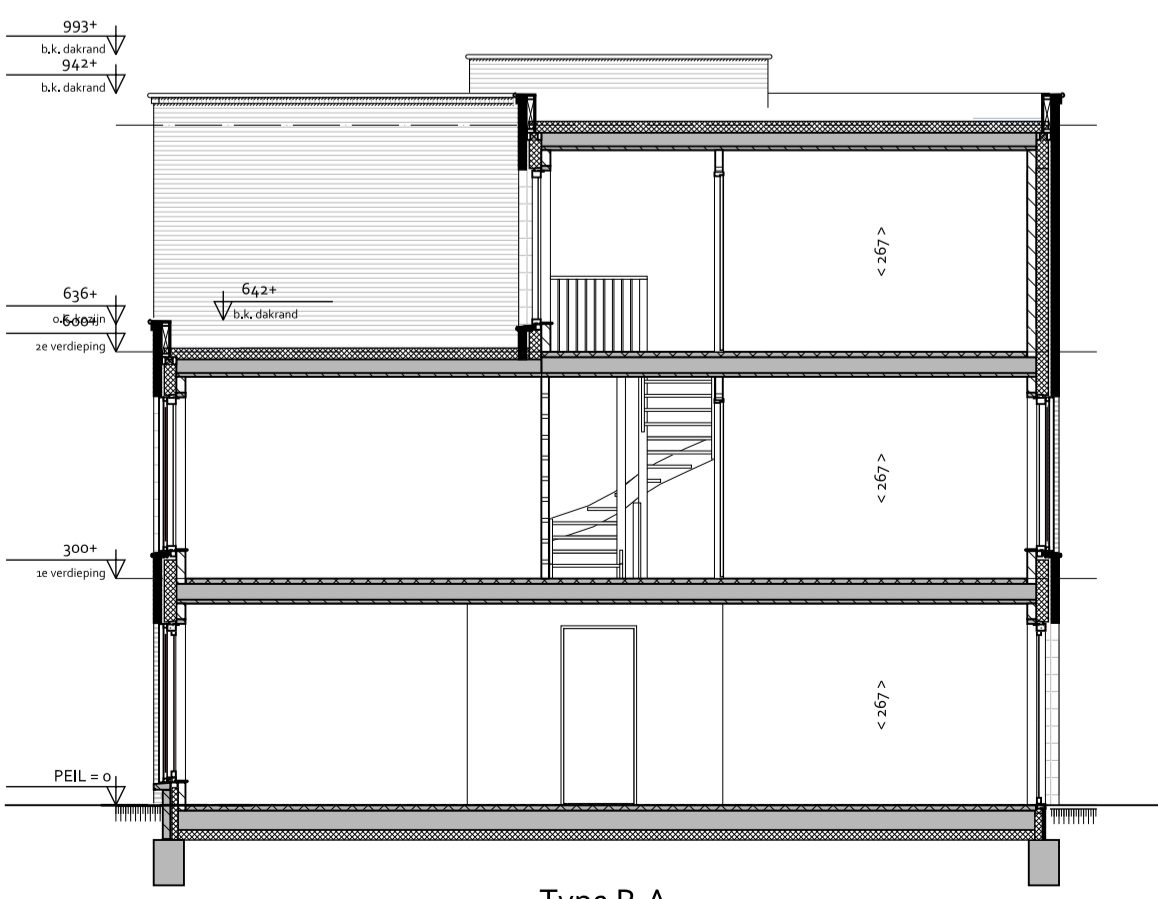
BEGANE GROND
1:50



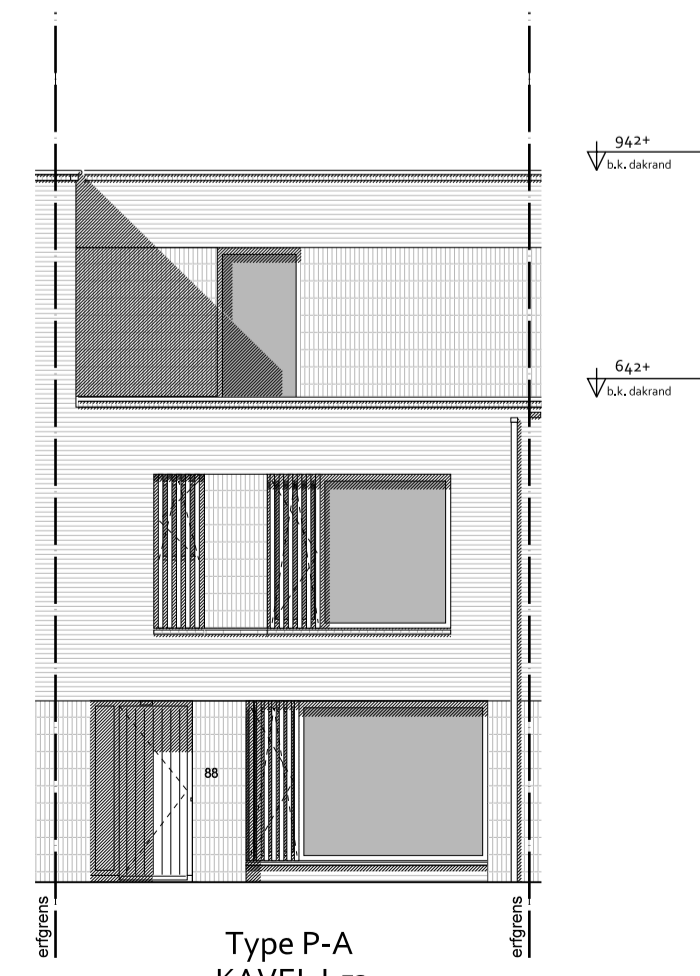
EERSTE VERDIEPING
1:50



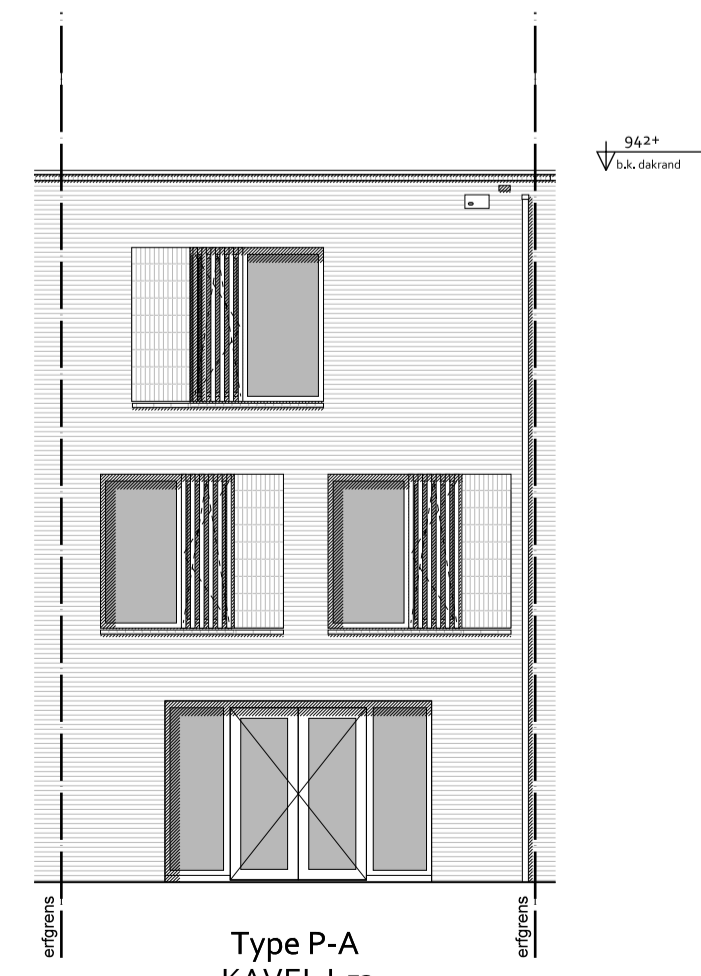
TWEDE VERDIEPING
1:50



DOORSNEDE A-A
1:100



VOORGEVEL
1:100



ACHTERGEVEL
1:100



SITUATIE 1:500



project	Landgoed Coudewater - Lobben fase 2
fase	Verkooptekening
tekening	Kavel L53 Type: P-A
datum: 10-07-2024	schaal: 1:50 / 1:100
	formaat: A1

DEFINITIEF